

Goizueta Business Library

Creating Bridges to Knowledge

Group Study Rooms FAQ

The Business School, Business Library, and Woodruff Library Building all have group study rooms that you can reserve.

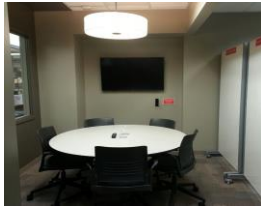
Goizueta Business Library

3 Group Study Areas

- For 3 or more people.
- Max of 2 hour reservation per work session.
- GBS community only.
- Each equipped with white boards, large digital monitors for connecting with laptops and mobile devices and extra seating.
- **Reserve a group study area** on the GBL Home Page (<http://business-emory.libcal.com/booking/gbl-rooms>)

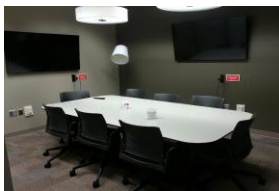
Round Table

- Seats 5-7



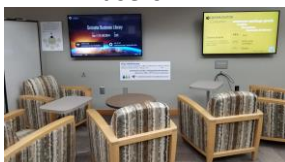
Rectangular Table

- Seats 8-10
- Solstice technology allowing simultaneous WiFi connectivity to multiple documents by multiple users



Soft Seating

- Seats 5+
- Solstice technology allowing simultaneous WiFi connectivity to multiple documents by multiple users



Goizueta Business School

- Max of 3 hours per session.
- Reserve rooms no more than two weeks in advance.
- Reserve rooms using 25 Live.
(<https://secure.web.emory.edu/r25webtools/breakOutRoom>) with your Emory login credentials.
- Each equipped a large flat-panel LED TV display with connections for laptops (VGA, HDMI)

12 Breakout Rooms

GBS_109 – seats 8

GBS_110 – seats 8

GBS_114– seats 8

GBS_115 – seats 8

GBS_116– seats 8

GBS_202– seats 8

GBS_203– seats 8

GBS_233– seats 8 and 1 Bloomberg Terminal

GBS_237– seats 8

GBS_303– seats 8

GBS_302– seats 8

GBS_333– seats 8 and 1 Bloomberg Terminal

GBS Computer Labs

- Room 400
 - 32 Windows desktops
 - 6 Bloomberg Terminals
- Room 103
 - 8 Windows desktops
 - 2 Mac desktops

GBS IT Availability Schedule

- Mon – Thurs, 7am – 9 pm
- Fri, 7am – 5pm
- Sat-Sun, 9am – 4pm

GBS IT Support

- **Located in GBS 400**
- Phone: 404-727-0581
- Email: gbsithelp@emory.edu

Woodruff Library Building

- Remember to check Woodruff Library Building Hours <http://web.library.emory.edu/using-the-library/visiting-the-library/hours/full-listing.html>

Group Study Rooms

Rooms 212, 215, 426, 434, 656, 664, 665, 756, 764, 765

To reserve a group study room:

http://sdl-resource-scheduler.emory.edu/booking/WML_GroupStudy

- The scheduling system includes pictures of each room with a description of technology.

Presentation Practice Room 213

- Includes presentation practice and recording functionality.
- [More info](#) about the seating and technology available in this room.

To reserve Presentation Practice Room 213:

http://sdl-resource-scheduler.emory.edu/booking/WML_213

- The scheduling system includes pictures of each room with a description of technology.

